



directPacket
Research

SEM

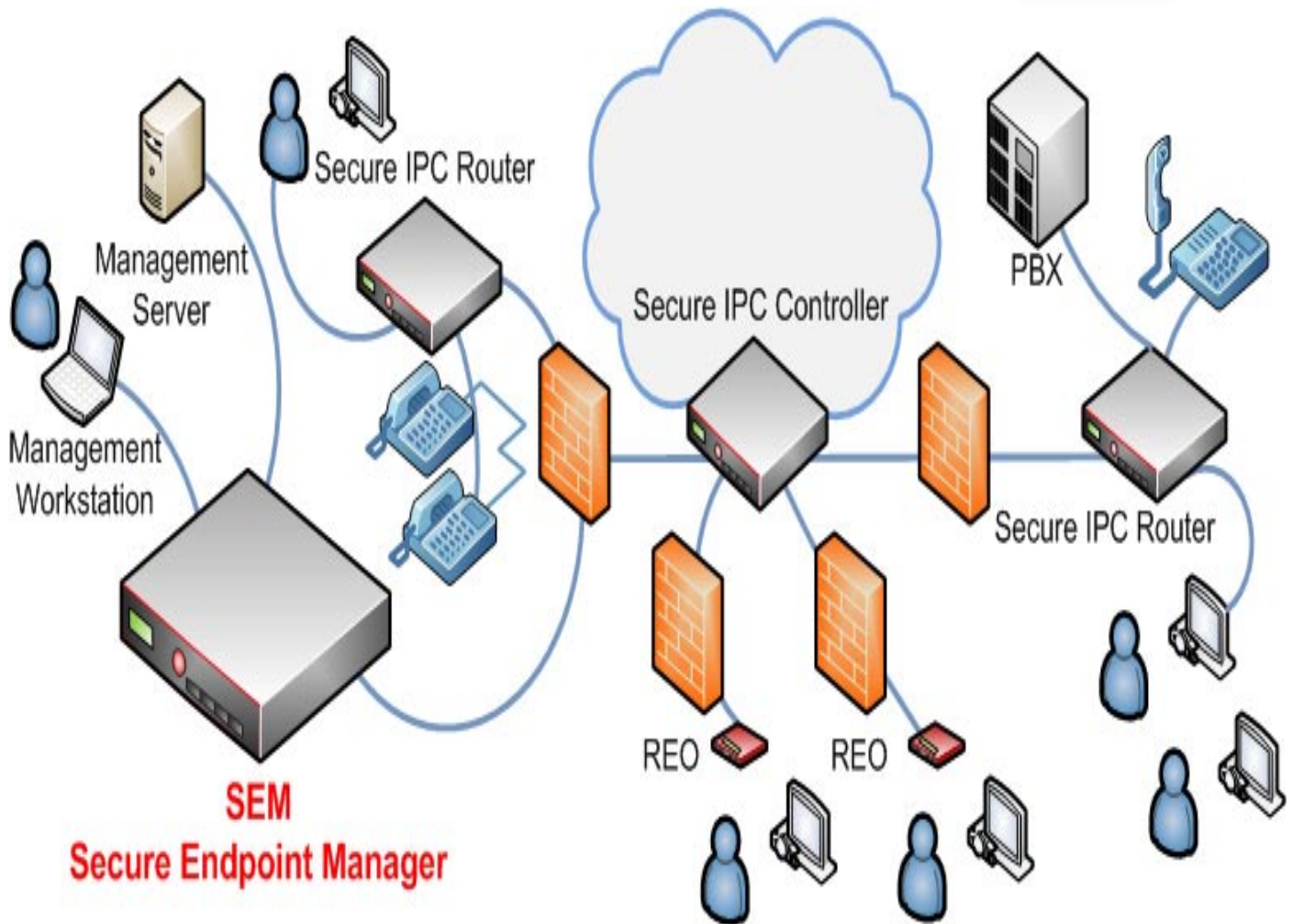
Secure Endpoint Manager

- Single stream TCP port
 - Default port 443, An alternate port may be selected
- Security
 - AES 256 bit Encryption
 - Encapsulated TLS/SSLv3 TCP only traffic
 - Block and restrict IP Address
 - Integrated Firewall functionality
 - Preserve confidentiality
 - Signaling and transmission validation
 - User and device authentication
 - Facilitate IP communications without bridging networks
- Protocols
 - HTTP
 - HTTPS
 - FTP
 - TFTP
 - SSH
 - TELNET
 - SNMP
- Application examples
 - Interface with third party management systems
 - Interface with standalone management station
 - Centralized Management and control
 - Video Endpoints
 - Video MCU
 - Audio Handsets
 - Audio Bridges
 - Gatekeepers
 - PBX
 - Firewall traversal
 - Single TCP port
 - Encapsulated TLS/SSLv3 TCP only traffic
 - Traverse one or many firewalls
 - NAT traversal
 - Liberate public IP addresses
 - Network planning
 - Eliminate VPN's
 - Simplify Infrastructure and ACL's
- Web GUI
 - SSL - HTTPS
 - SSL certificate management
 - IP Access control
 - ACL – manage user permissions per device

The Direct Packet Research **Secure** Endpoint Manager System is a turn-key solution which consists of a **Secure** Endpoint Manager (SEM), **Secure** IPC Controller and IPC Routers. These devices when used in conjunction with one another facilitate the simplified integration and expanded reach of a **secure** global management strategy for IP video and/or audio (VoIP) communication devices and the systems that govern their functionality from one centralized location.

The **Secure** Endpoint Manager (SEM) is an intelligent internal network device (LAN). Its primary functions are to facilitate the routing, signaling and validation of IP endpoint management and control (HTTP, HTTPS, FTP, TFTP, SSH, TELNET, and SNMP) packets without modifying or impeding the integrity or functionality provided by such packets. The **Secure** Endpoint Manager (SEM) is positioned in the same Local Area Network (LAN) as the system that governs and manages IP video and/or audio (VoIP) communication devices. The SEM interfaces with a designated Third party management device or a standalone management workstation. When connected to an IPC Controller the SEM provides seamless communication between endpoints and their management host via one single TCP (only)* TLS/SSLv3 AES 256 bit encrypted stream. Once the **secure** link between the, **Secure** Endpoint Manager (SEM), **Secure** IPC Controller, and IPC Routers has been established the solutions then directs and disseminates all management and control packet transmissions to their corresponding destination. The SEM features an integrated intelligent client/host authentication mechanism and robust protocol validation for providing seamless interoperability with a myriad of devices regardless of their native protocol version or requirements. The benefits to such a technology include:

- Centralized solution management
- **Secure** the transmission of signaling packets
- **Secure** the transmission of management and control data packets
- Expanded reach of network visibility
- **Secure** confidential network information
- Non-bridged resolution of isolated and disparate networks
- Firewall and NAT traversal.



SEM 50	Secure Endpoint Manager Manage and control up to 50 Endpoints from one central location
SEM 100	Secure Endpoint Manager Manage and control up to 100 Endpoints from one central location
SEM 150	Secure Endpoint Manager Manage and control up to 150 Endpoints from one central location
SEM 500	Secure Endpoint Manager Manage and control up to 500 Endpoints from one central location



directPacket
Research

SEM

Secure Endpoint Manager

Direct Packet Research HQ
4545 Fuller Drive
Suite 326
Irving, Texas USA 75038
Tel: 1-800-278-1087
Fax: 972-680-8435
Video: 24.227.210.230
sales@directpacket.com

directPacket
Research