



# directPacket Research

## IPC-C

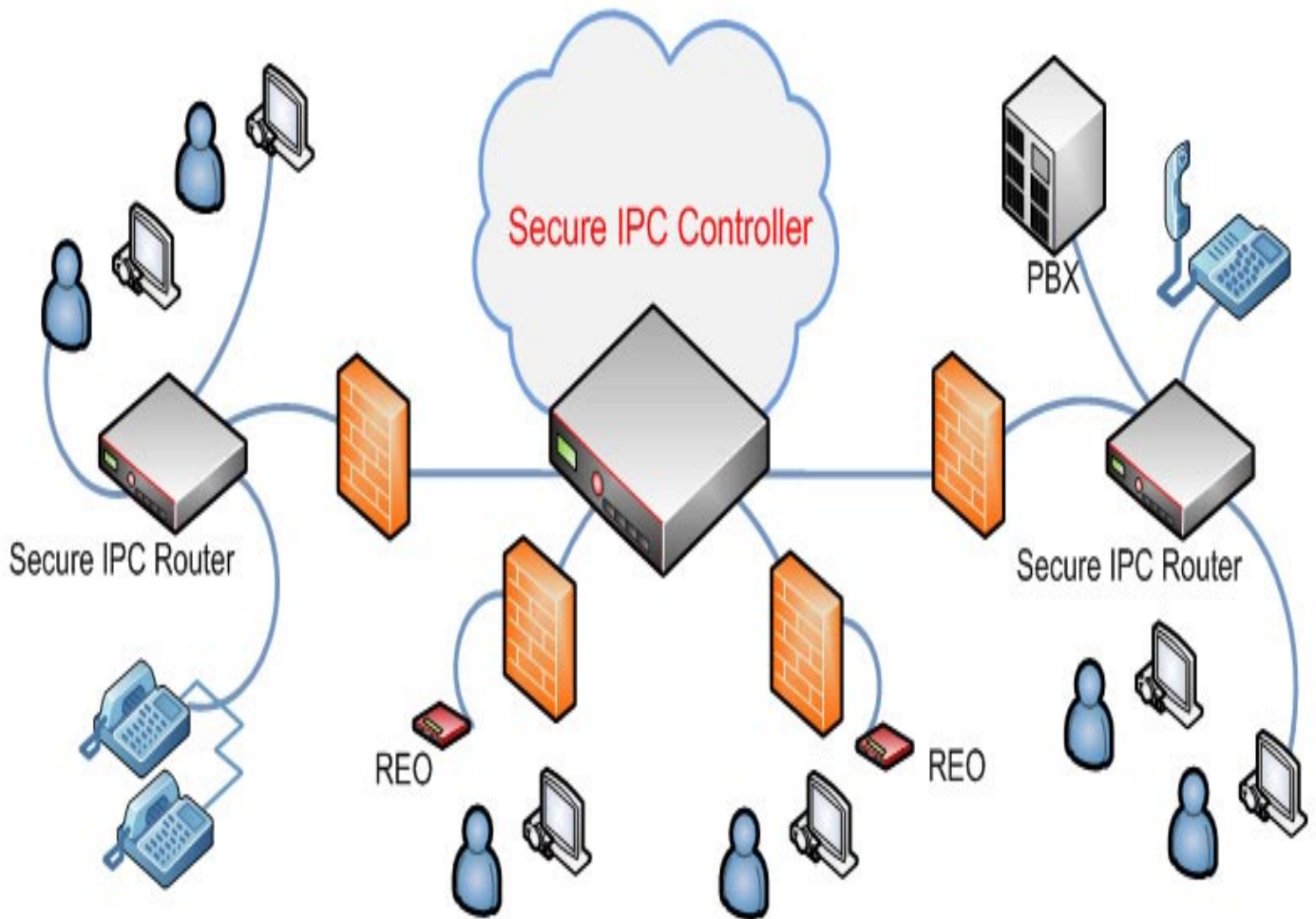
### Secure IP Communication Controller

- Single stream TCP port
  - Default port 443, An alternate port may be selected
- Security
  - AES 256 bit Encryption
  - Encapsulated TLS/SSLv3 TCP only traffic
  - Registration/Registrar Restrictions
  - Block and restrict IP Address
  - Hardened internet facing device
    - Integrated Firewall functionality
    - Preserve confidentiality
    - Signaling and media validation
- Transport Protocol
  - Protocol normalization and interoperability for SIP and H.323
  - Transparent to the end user
- Application examples
  - Advanced routing configurations
    - 4 X 1 Gigabit Ethernet adapters
    - Facilitate IP communications without bridging networks
  - Firewall traversal
    - Single TCP port
    - Encapsulated TLS/SSLv3 TCP only traffic
    - Traverse one or many firewalls
    - E164 dialing
    - URI dialing
    - Auto Attendant
    - Bandwidth management
  - NAT traversal
    - Liberate public IP addresses
  - Integrated H.323 Gatekeeper/Gateway
  - Network planning
  - Integrated SIP Trunk/Gateway/Proxy
  - Simplify Infrastructure and ACL's
  - CDRs
    - Accounting (billing)
  - Expand reach of linked PBX Services via IP
    - Blind Transfer
    - Call Detail Records
    - Call Forward on Busy
    - Call Forward on No Answer
    - Call Routing (DID)
    - Call Transfer
    - Call Waiting
    - Caller ID
    - Caller ID on Call Waiting
    - Message Waiting Indication (MWI)
    - Music On Hold
    - Music On Transfer
    - Supervised Transfer
    - Three-way Calling
    - Voicemail
- Web GUI
  - SSL - HTTPS
  - SSL certificate management
  - IP Access control
  - ACL - manage user permissions per device
  - Centralized system management
    - Remote control entire community via Secure IPC controller
    - Upgrade all community devices

The Direct Packet Research **Secure** Internet Protocol Communications (IPC) platform is a turn-key solution which consists of the **Secure** IPC Controller and an IPC Router. These devices when used in conjunction with one another facilitate the simplified integration of an IP video and/or audio (VoIP) network topology. The IPC Platform provides the basis of a **secure**, robust and easily managed IP communications environment with a multitude of functionality.

The **Secure** IPC Controller is a hardened internet facing device with its own integrated firewall technology designed to defend itself in hostile environments. Its primary functions are to perform signaling and media validation and to provide the **secure** transmission of IP video and audio (SIP/H.323) packets without modifying or impeding the integrity of such packets. The **Secure** IPC Controller is positioned in the Internet Cloud and listens for **secure** connection requests from IPC Routers. The communication between the IPC Controller and IPC Router is established via one single TCP (only)\* TLS/SSLv3 AES 256 bit encrypted stream. Since IP video and audio media packets are primarily UDP, this single TCP porting technology is paramount when deploying an IP communication network in a security conscience environment where UDP traffic must be limited or eradicated altogether. Once the **secure** link between the **Secure** IPC Controller and an IPC Router has been established the solution then directs and disseminates all video and audio packet transmissions to their corresponding destination. The **Secure** IPC Controller features an intelligent integrated H.323 gatekeeper and/or SIP registrar for providing seamless interoperability with a myriad of devices regardless of their native transport protocol version, requirements or manufacturer. The **Secure** IPC Controller also acts as a management and update server for itself and IPC Routers that are connected via the TLS/SSLv3 AES 256 bit encrypted stream. The benefits of the IPC Platform include:

- centralized solution management
- additional security for transport
- signaling and media streams
- expand the reach of network communication
- **Secure** confidential network information
- non-bridged resolution of isolated and disparate networks
- **Secure** single port firewall and NAT traversal.



C10

**Secure IPC Controller - 10 IPC Router Registrations**  
 Max 50 Video **OR** 500 Audio Traversal Calls

C25

**Secure IPC Controller - 25 IPC Router Registrations**  
 Max 100 Video **OR** 1000 Audio Traversal Calls

C50

**Secure IPC Controller - 50 IPC Router Registrations**  
 Max 250 Video **OR** 2500 Audio Traversal Calls

C100

**Secure IPC Controller - 100 IPC Router Registrations**  
 Max 375 Video **OR** 3750 Audio Traversal Calls



**directPacket**  
 Research  
**IPC-C**  
 Secure IP Communication  
 Controller

Direct Packet Research HQ  
 4545 Fuller Drive  
 Suite 328  
 Irving, Texas USA 75038  
 Tel: 1-800-278-1087  
 Fax: 972-680-8435  
 Video: 24.227.210.230  
 sales@directpacket.com